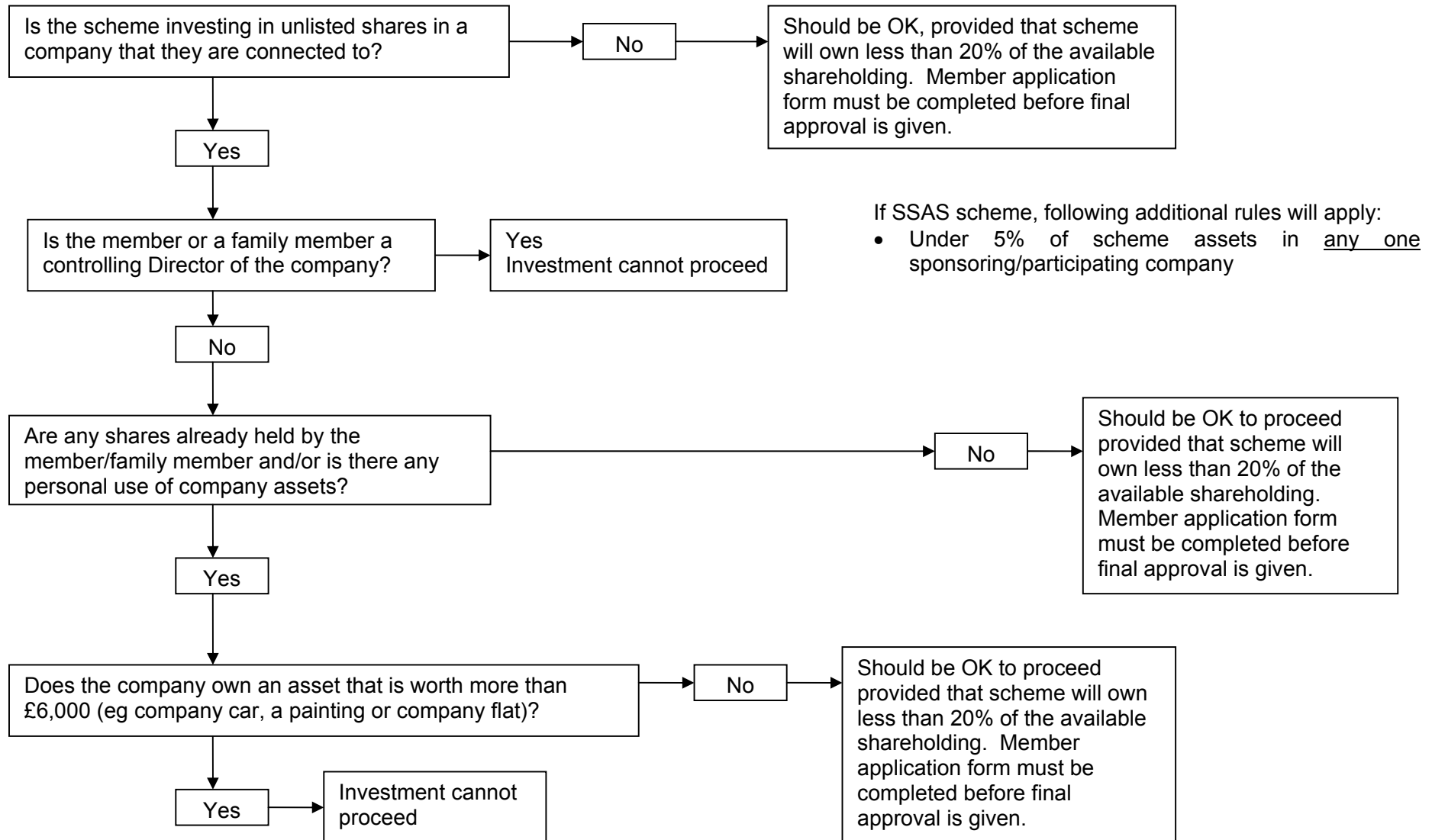


UNLISTED SHARES FLOWCHART

**IF THE COMPANY IS CLASSED AS A CLOSE COMPANY THEN WE MUST ALSO OBTAIN A LIST OF SHAREHOLDERS
(A Close company is a UK company controlled by less than 5 participators/shareholders, or any number of participators/shareholders if they are directors and they control more than half of the voting rights)**



We require a completed Members application form, valuation of the total shareholding by an Accountant and copies of Audited Accounts from the company. Upon receipt of these, the case will be reviewed. If one these items cannot be provided, the case will be passed to senior management for a decision.

If you are unsure whether the unlisted shares will be allowed, please refer to your local Trustee Consultant or the Technical Team.